



COOPER CARRY  
THE CENTER FOR CONNECTIVE ARCHITECTURE

191 Peachtree Street NE  
Suite 2400  
Atlanta, GA 30303-1770  
(404) 237-2000  
coopercarry.com

ASSOCIATE ARCHITECT:

Moody Nolan

©2024 COOPER CARRY

SCOPE DOCUMENTS

The Contract Documents issued for [Conceptual Design, Schematic Design, Design Development, Partial Construction Documents or Other Issuance up to Issued for Construction] are intended to be at that level of development and as such, may be neither complete nor coordinated. The [Construction Manager, Contractor, Design/Builder] is responsible for complete and coordinated pricing [and execution] of the Work, and shall include items necessary for the proper execution and completion of the Work, as shown, specified, reasonably inferred or required for a complete Project. For Work of delegated designs, systems, assemblies, components and materials shall comply with national, state and local code requirements. The [Construction Manager, Contractor, Design/Builder] shall inform the Owner and Architect, in timely fashion, of any discovered omissions, inconsistencies or errors in the Contract Documents.

ISSUANCES

No.	Drawing Issue Description	Date
1	SCHEMATIC DESIGN	2024-09-18

CONVENTION CENTER  
(NOT IN SCOPE)

CINCINNATI CONVENTION CENTER HOTEL

250 W 5TH STREET  
CINCINNATI, OHIO

Portman Holdings

REFERENCE PLAN - LEVEL 2 LOBBY

BOB NEAL	20240011
Principal in Charge	Project No.
BILL GARCIA	
Project Manager	Date
ARMAN TOLENTINO	
Project Architect	
MOISES VILLANUEVA	
Staff Architect	

A1.02

NOT ISSUED FOR CONSTRUCTION

PROJECT NUMBER: 20240011 PROJECT NAME: CINCINNATI CONVENTION CENTER HOTEL  
SHEET NUMBER: A1.02 - REFERENCE PLAN - LEVEL 2 LOBBY  
Autodesk Docs://20240011 Cincinnati Convention Center Hotel/20240011\_R23\_OCC-HOTEL\_ARCH\_BASE.mxd  
4/4/2025 2:56:13 PM

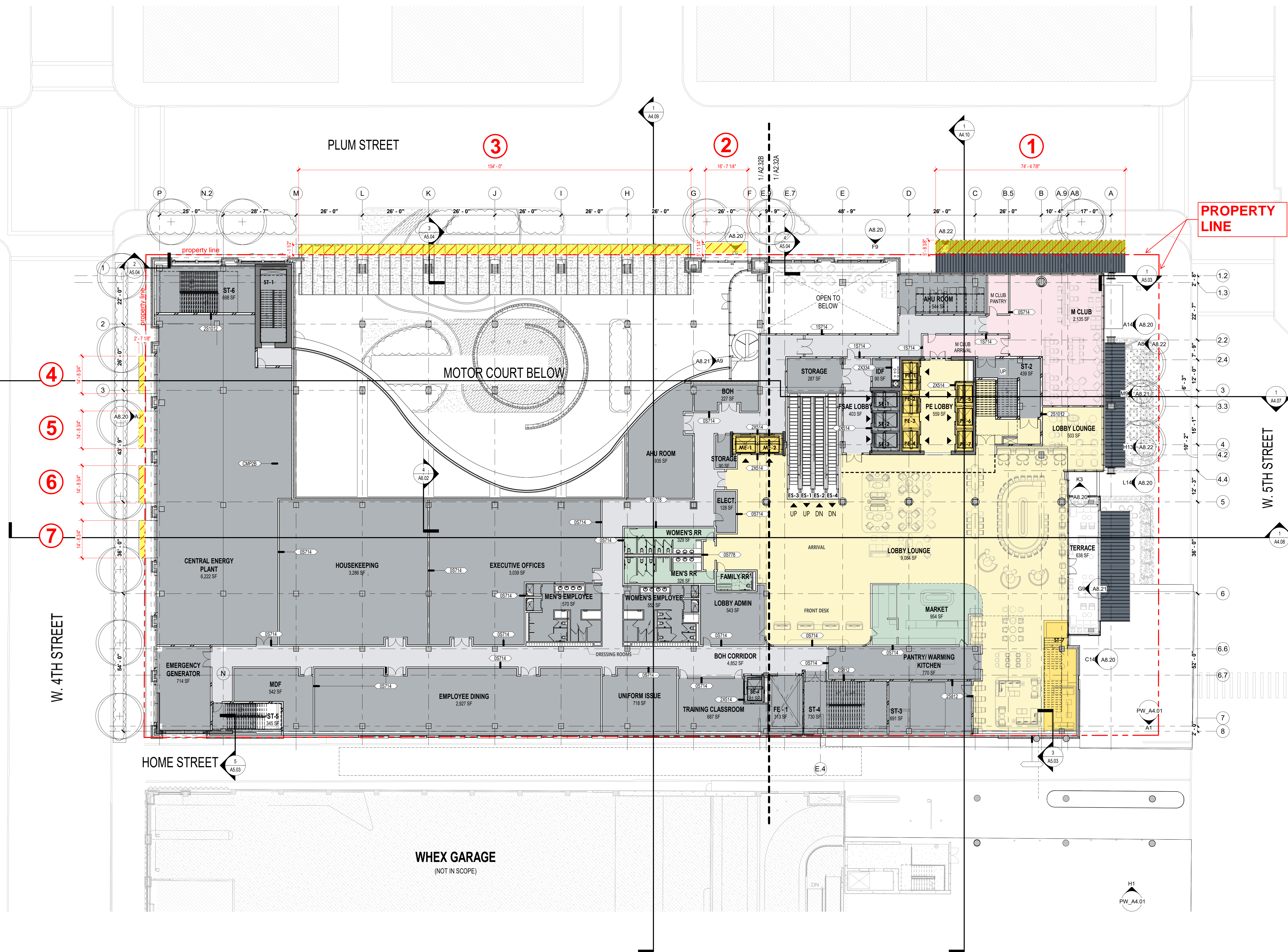


1

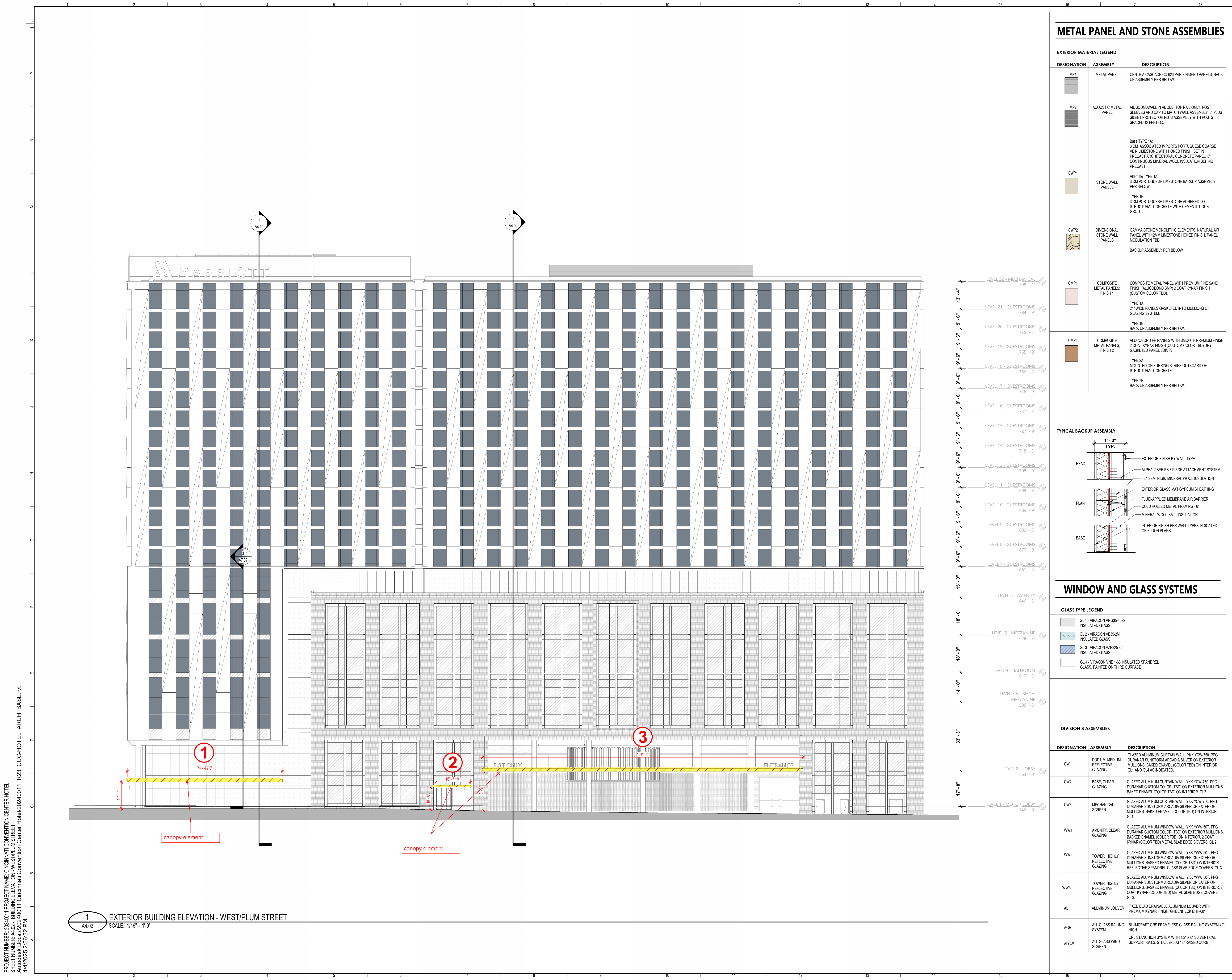
A1.02

REFERENCE PLAN - LEVEL 2 LOBBY

SCALE: 1/16" = 1'-0"





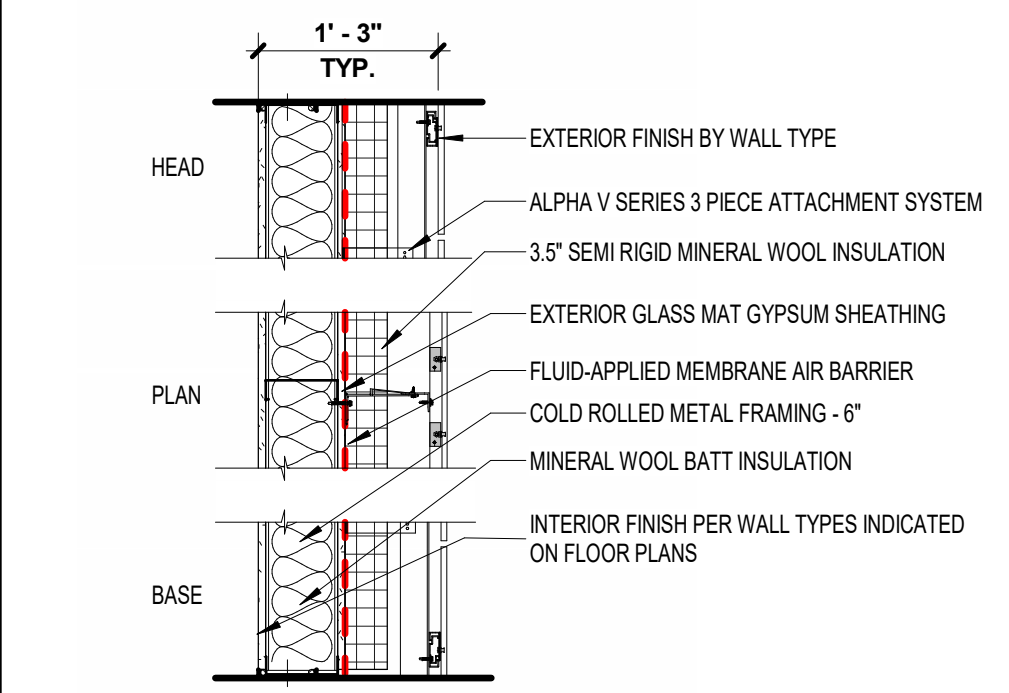


## METAL PANEL AND STONE ASSEMBLIES

### EXTERIOR MATERIAL LEGEND

DESIGNATION	ASSEMBLY	DESCRIPTION
MP1	METAL PANEL	CENTRIA CASCADE CC-623 PRE-FINISHED PANELS, BACK UP ASSEMBLY PER BELOW
MP2	ACOUSTIC METAL PANEL	AL SOUNDWALL IN ADOBE, TOP RAIL ONLY. POST SLEEVES AND CAP TO MATCH WALL ASSEMBLY. 3" PLUS SILENT PROTECTOR PLUS ASSEMBLY WITH POSTS SPACED 12 FEET O.C.
SWP1	STONE WALL PANELS	Base TYPE 1A: 3 CM ASSOCIATED IMPORTS PORTUGUESE COARSE VEN LESTONE WITH HONED FINISH. SET IN PRECAST ARCHITECTURAL CONCRETE PANEL. 6" CONTINUOUS MINERAL WOOL INSULATION BEHIND PRECAST.  Alternate TYPE 1A: 3 CM PORTUGUESE LESTONE BACKUP ASSEMBLY PER BELOW.  TYPE 1B: 3 CM PORTUGUESE LESTONE ADHERED TO STRUCTURAL CONCRETE WITH CEMENTITIOUS GROUT.
SWP2	DIMENSIONAL STONE WALL PANELS	GAMMA STONE MONOLITHIC ELEMENTS. NATURAL AIR PANEL WITH 12MM LESTONE HONED FINISH. PANEL MODULATION TBD.  BACKUP ASSEMBLY PER BELOW
OMP1	COMPOSITE METAL PANELS, FINISH 1	COMPOSITE METAL PANEL WITH PREMIUM FINE SAND FINISH (ALUCOBOND SMP) 2 COAT KYNAR FINISH (CUSTOM COLOR TBD).  TYPE 1A: 24" WIDE PANELS GASKETED INTO MULLIONS OF GLAZING SYSTEM.  TYPE 1B: BACK UP ASSEMBLY PER BELOW.
OMP2	COMPOSITE METAL PANELS, FINISH 2	ALUCOBOND FR PANELS WITH SMOOTH PREMIUM FINISH. 2 COAT KYNAR FINISH (CUSTOM COLOR TBD) DRY GASKETED PANEL JOINTS.  TYPE 2A: MOUNTED ON FURRING STRIPS OUTBOARD OF STRUCTURAL CONCRETE.  TYPE 2B: BACK UP ASSEMBLY PER BELOW.

### TYPICAL BACKUP ASSEMBLY



## WINDOW AND GLASS SYSTEMS

### GLASS TYPE LEGEND

GL 1 - VIRACON VNG35-4022	INSULATED GLASS
GL 2 - VIRACON VE35-2M	INSULATED GLASS
GL 3 - VIRACON VZE35-42	INSULATED GLASS
GL 4 - VIRACON VNE 1-43	INSULATED SPANDREL GLASS, PAINTED ON THIRD SURFACE

### DIVISION 8 ASSEMBLIES

DESIGNATION	ASSEMBLY	DESCRIPTION
CW1	PODIUM, MEDIUM REFLECTIVE GLAZING	GLAZED ALUMINUM CURTAIN WALL. YKK YCW-750. PPG DURANAR SUNSTORM ARCADIA SILVER ON EXTERIOR MULLIONS. BAKED ENAMEL (COLOR TBD) ON INTERIOR. GL 1 AND GL 4 AS INDICATED.
CW2	BASE, CLEAR GLAZING	GLAZED ALUMINUM CURTAIN WALL. YKK YCW-750. PPG DURANAR CUSTOM COLOR (TBD) ON EXTERIOR MULLIONS. BAKED ENAMEL (COLOR TBD) ON INTERIOR. GL 2
CW3	MECHANICAL SCREEN	GLAZED ALUMINUM CURTAIN WALL. YKK YCW-750. PPG DURANAR SUNSTORM ARCADIA SILVER ON EXTERIOR MULLIONS. BAKED ENAMEL (COLOR TBD) ON INTERIOR. GL 4.
WW1	AMENITY, CLEAR GLAZING	GLAZED ALUMINUM WINDOW WALL. YKK YWV 50T. PPG DURANAR CUSTOM COLOR (TBD) ON EXTERIOR MULLIONS. BAKED ENAMEL (COLOR TBD) ON INTERIOR. 2 COAT KYNAR (COLOR TBD) METAL SLAB EDGE COVERS. GL 2.
WW2	TOWER, HIGHLY REFLECTIVE GLAZING	GLAZED ALUMINUM WINDOW WALL. YKK YWV 50T. PPG DURANAR SUNSTORM ARCADIA SILVER ON EXTERIOR MULLIONS. BAKED ENAMEL (COLOR TBD) ON INTERIOR. REFLECTIVE SPANDREL GLASS SLAB EDGE COVERS. GL 3.
WW3	TOWER, HIGHLY REFLECTIVE GLAZING	GLAZED ALUMINUM WINDOW WALL. YKK YWV 50T. PPG DURANAR SUNSTORM ARCADIA SILVER ON EXTERIOR MULLIONS. BAKED ENAMEL (COLOR TBD) ON INTERIOR. 2 COAT KYNAR (COLOR TBD) METAL SLAB EDGE COVERS. GL 3.
AL	ALUMINUM LOUVER	FIXED BLAD DRAINABLE ALUMINUM LOUVER WITH PREMIUM KYNAR FINISH. GREENHECK EHH-601
AGR	ALL GLASS RAILING SYSTEM	BLUMCRAFT GRS FRAMELESS GLASS RAILING SYSTEM 42" HIGH
ALGW	ALL GLASS WIND SCREEN	CRL STANCHION SYSTEM WITH 1/2" X 6" SS VERTICAL SUPPORT RAILS. 5' TALL (PLUS 12" RAISED CURB)

ISSUANCES		
No.	Drawing Issue Description	Date
1	SCHEMATIC DESIGN	2024-09-18

## CINCINNATI CONVENTION CENTER HOTEL

250 W 5TH STREET  
CINCINNATI, OHIO

Portman Holdings

## BUILDING ELEVATION - WEST/PLUM STREET

BOB NEAL Principal in Charge	20240011 Project No.
BILL GARCIA Project Manager	Date
ARMAN TOLENTINO Project Architect	
MOISES VILLANUEVA Staff Architect	

A4.02

NOT ISSUED FOR CONSTRUCTION



ASSOCIATE ARCHITECT

©2024 COOPER CARRY







## SCOPE DOCUMENTS

The Contract Documents issued for [Conceptual Design, Schematic Design, Design Development, Partial Construction Documents or Other Issuance up to Issued for Construction] are intended to be at that level of development and as such, may be neither complete nor coordinated. The [Construction Manager, Contractor, Design/Build/Construct] is responsible for completing the design and/or construction of the Work and shall include items necessary for the proper execution and completion of the Work, as shown, specified, reasonably inferred or required for a complete Project. For Work of delegated designs; systems, assemblies, components and materials shall comply with national, state and local code requirements. The [Construction Manager, Contractor, Design/Build] shall inform the Owner and Architect, in timely fashion, of any discovered omissions, inconsistencies or errors in the Contract Documents.

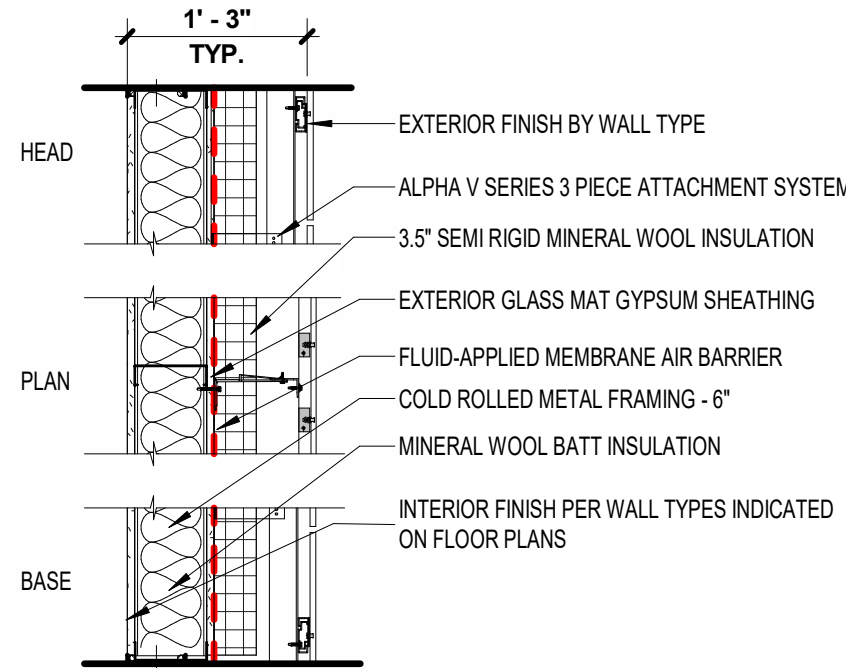
## ISSUANCES

ISSUANCES		
No.	Drawing Issue Description	Date
	SCHEMATIC DESIGN	2024-09-18

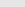
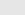


### EXTERIOR MATERIAL LEGEND

DESIGNATION	ASSEMBLY	DESCRIPTION
MP1 	METAL PANEL	CENTRIA CASCADE CC423 PRE-FINISHED PANELS, BACK UP ASSEMBLY PER BELOW.
MP2 	ACOUSTIC METAL PANEL	AL SOUNDWALL IN ADOBE. TOP RAIL ONLY. POST SLEEVES AND CAP TO MATCH WALL ASSEMBLY. 3" PLUS SILENT PROTECTOR PLUS ASSEMBLY WITH POSTS SPACED 12 FEET O.C.
SWP1 	STONE WALL PANELS	<p>Base TYPE 1A: 3 CM ASSOCIATED IMPORTS PORTUGUESE COARSE VENI LESTONE WITH HONED FINISH. SET IN PRECAST ARCHITECTURAL CONCRETE PANEL. IF CONTINUOUS MINERAL WOOL INSULATION BEHIND PRECAST</p> <p>Alternate TYPE 1A: 3 CM PORTUGUESE LESTONE BACKUP ASSEMBLY PER BELOW.</p> <p>TYPE 1B: 3 CM PORTUGUESE LESTONE ADHERED TO STRUCTURAL CONCRETE WITH CEMENTITIOUS GROUT.</p>
SWP2 	DIMENSIONAL STONE WALL PANELS	<p>GAMMA STONE MONOLITHIC ELEMENTS. NATURAL AIR PANEL WITH 12MM LESTONE HONED FINISH. PANEL MODULATION TBD.</p> <p>BACKUP ASSEMBLY PER BELOW</p>
CMP1 	COMPOSITE METAL PANELS. FINISH 1	<p>COMPOSITE METAL PANEL WITH PREMIUM FINE SAND FINISH (ALUCOBOND SMP) 2 COAT KYNAR FINISH (CUSTOM COLOR TBD)</p> <p>TYPE 1A: 24" WIDE PANELS GASKETED INTO MULLIONS OF GLAZING SYSTEM.</p> <p>TYPE 1B: BACK UP ASSEMBLY PER BELOW.</p>
CMP2 	COMPOSITE METAL PANELS. FINISH 2	<p>ALUCOBOND FR PANELS WITH SMOOTH PREMIUM FINISH. 2 COAT KYNAR FINISH (CUSTOM COLOR TBD) GROUT GASKETED METAL JOINTS.</p> <p>TYPE 2A: MOUNTED ON FURRING STRIPS OUTBOARD OF STRUCTURAL CONCRETE.</p> <p>TYPE 2B: BACK UP ASSEMBLY PER BELOW.</p>

### TYPICAL BACKUP ASSEMBLY



### GLASS TYPE LEGEND

	GL 1 - VIRACON VNG35-4022 INSULATED GLASS
	GL 2 - VIRACON VE35-2M INSULATED GLASS
	GL 3 - VIRACON VZE325-42 INSULATED GLASS
	GL 4 - VIRACON VNE 1-63 IN: GLASS, PAINTED ON THIRD

## DIVISION 8 ASSEMBLIES

DESIGNATION	ASSEMBLY	DESCRIPTION
		GLAZED ALUMINUM CURTAIN WALL. YKK YCW-75. PPG DURANOR SUSTONAIR ARCADIA SILVER ON EXTERIOR MILLIONS. BAKED ENAMEL (COLOR TBD) ON INTERIOR GL. AND GL. AS INDICATED.
CW1	PODIUM MEDIUM REFLECTIVE GLAZING	
CW2	BASE CLEAR GLAZING	GLAZED ALUMINUM CURTAIN WALL. YKK YCW-75. PPG DURANOR SUSTONAIR ARCADIA SILVER ON EXTERIOR MILLIONS. BAKED ENAMEL (COLOR TBD) ON INTERIOR GL.2
CW3	MECHANICAL SCREEN	GLAZED ALUMINUM CURTAIN WALL. YKK YCW-75. PPG DURANOR SUSTONAIR ARCADIA SILVER ON EXTERIOR MILLIONS. BAKED ENAMEL (COLOR TBD) ON INTERIOR GL.4.
WW1	AMENITY CLEAR GLAZING	GLAZED ALUMINUM WINDOW WALL. YKK YWW-51T. PPG DURANOR SUSTONAIR ARCADIA SILVER ON EXTERIOR MILLIONS. BAKED ENAMEL (COLOR TBD) ON INTERIOR. 2 COAT KYNAR (COLOR TBD) METAL SLAB EDGE COVERS. GL. 2
WW2	TOWER HIGHLY REFLECTIVE GLAZING	GLAZED ALUMINUM WINDOW WALL. YKK YWW-51T. PPG DURANOR SUSTONAIR ARCADIA SILVER ON EXTERIOR MILLIONS. BAKED ENAMEL (COLOR TBD) ON INTERIOR. REFLECTIVE SPEC. GLASS SLAB EDGE COVERS. GL. 3.
WW3	TOWER HIGHLY REFLECTIVE GLAZING	GLAZED ALUMINUM WINDOW WALL. YKK YWW-51T. PPG DURANOR SUSTONAIR ARCADIA SILVER ON EXTERIOR MILLIONS. BAKED ENAMEL (COLOR TBD) ON INTERIOR. 2 COAT KYNAR (COLOR TBD) METAL SLAB EDGE COVERS. GL. 3.
AL	ALUMINUM LOUVER	FIXED BLD DRAINABLE ALUMINUM LOUVER WITH PREMIUM KYNAR FINISH. GREENWEDGE EHD-801
AGR	ALL GLASS RAILING SYSTEM	BUMFROT GR5 FRAMELESS GLASS RAILING SYSTEM 42" HIGH
ALGW	ALL GLASS WIND SCREEN	ORL STANCHION SYSTEM WITH 12" X 8" SS VERTICAL SUPPORT BOLTS. 5" TALL (PLUS 2" BASE) CURVE

## Portman Holdings

BOB NEAL

2024001

BILL GARCIA

---

ARMAN TC

---

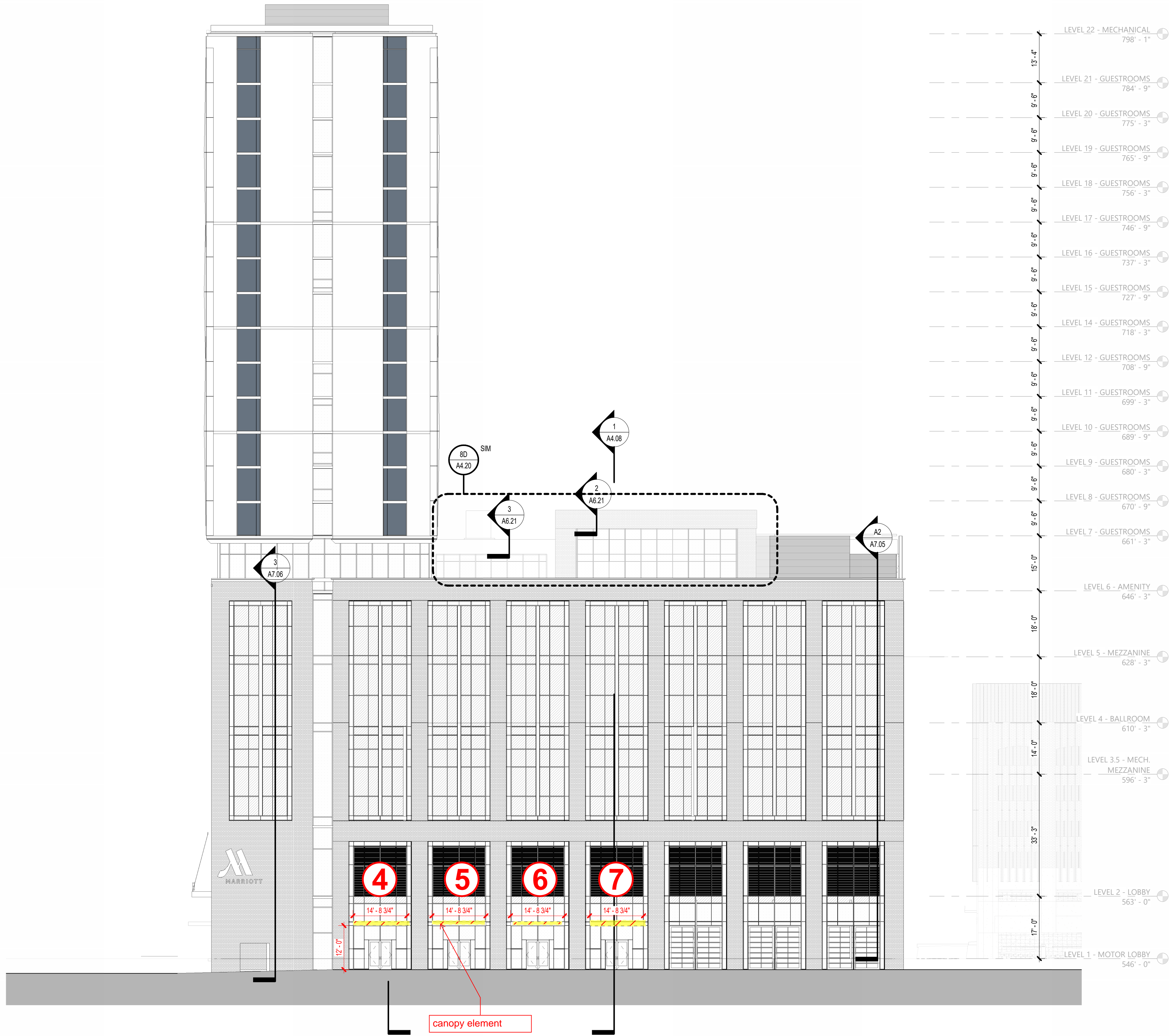
MOISES VI

### Staff Architect

A

Drawing No.

NOT ISSUED FOR CONSTRUCTION



1  
A4.03

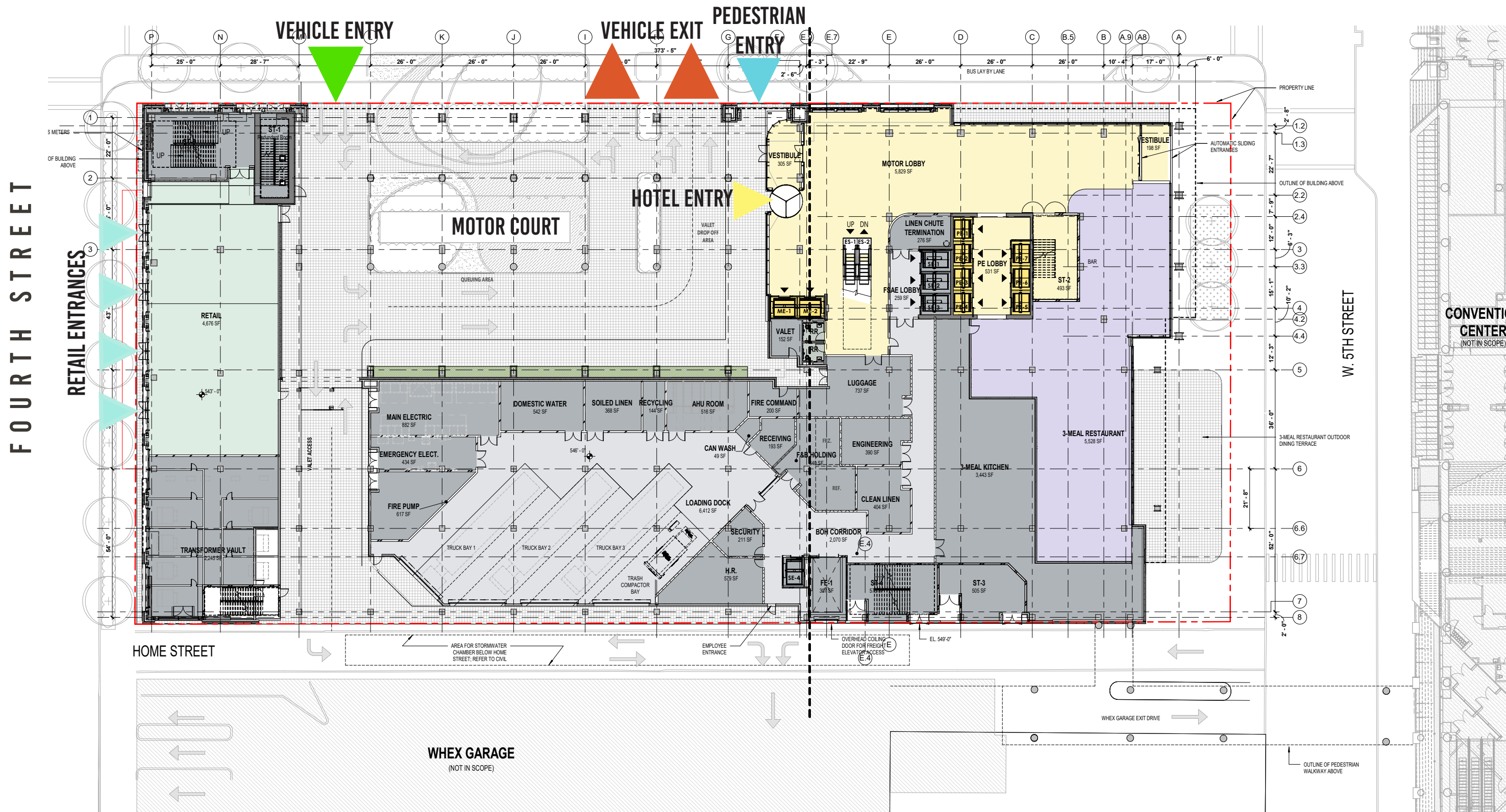
EXTERIOR BUILDING ELEVATION - SOUTH/4TH STREET  
SCALE: 1/16" = 1'-0"

PROJECT NUMBER: 20240011 PROJECT NAME: CINCINNATI CONVENTION CENTER HOTEL  
SHEET NUMBER: 44.03 - BUILDING ELEVATION - SOUTH/4TH STREET  
Autodesk Docs://20240011 Cincinnati Convention Center Hotel/20240011\_R23\_CCC-HOTEL\_ARCH\_BASE.rvt  
11/09/2025 05:07:50 PM



# MOTOR LOBBY PLAN

PLUM STREET





# CONCEPT RENDERING

FROM PLUM STREET





# CONCEPT RENDERING

SOUTH RETAIL FACADE (4TH STREET)

